

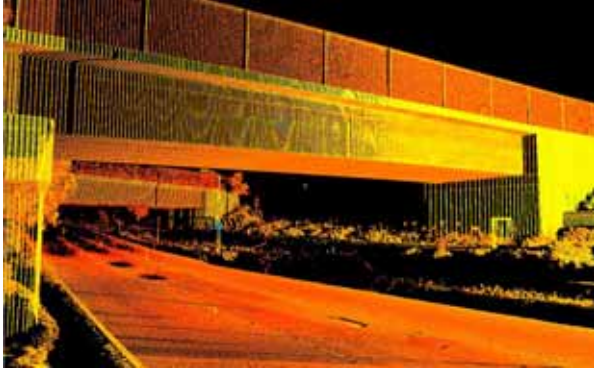
# *High Definition Laser Scanner*

The latest in surveying technology collects thousands of topographic shots per second, improves safety for surveyors in the field and increases the design workflow. The technology that does all this is a High Definition Surveying (HDS) Laser Scanner. This tool allows surveyors to provide Clients better information at a faster rate.

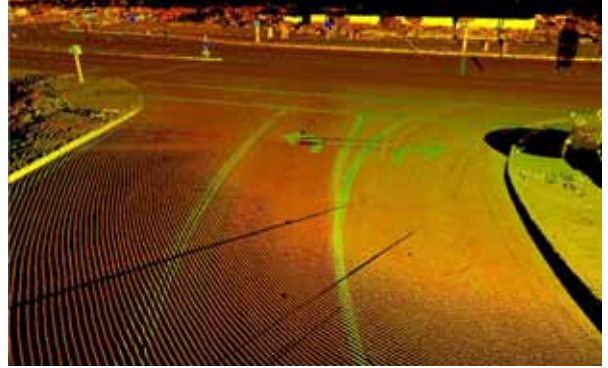
HDS collects topographic information on projects where considerable detail, high accuracy, accessibility and safety are concerns. The HDS scanner utilizes a time-pulse laser to obtain literally thousands of 3D topographic shots per second. In about an hour's time, and from a single instrument setup the surveyor can collect millions of topographic points on detailed projects.

Scanner technology is a viable solution for measuring and monitoring surfaces and features that are not safe to approach or occupy such as landslides, cliffs, river banks, chemical or electrical facilities, overhead wires and high traffic areas.

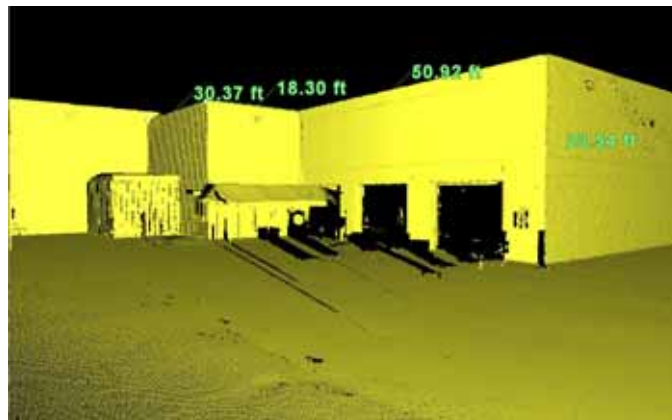
Land Surveyors has taken advantage of ever changing technology by providing HDS Laser Scanning as a tool to better service clients and to maximize the safety.



A railroad over crossing point cloud.



A median improvement project point cloud.



A regional tire service center point cloud.